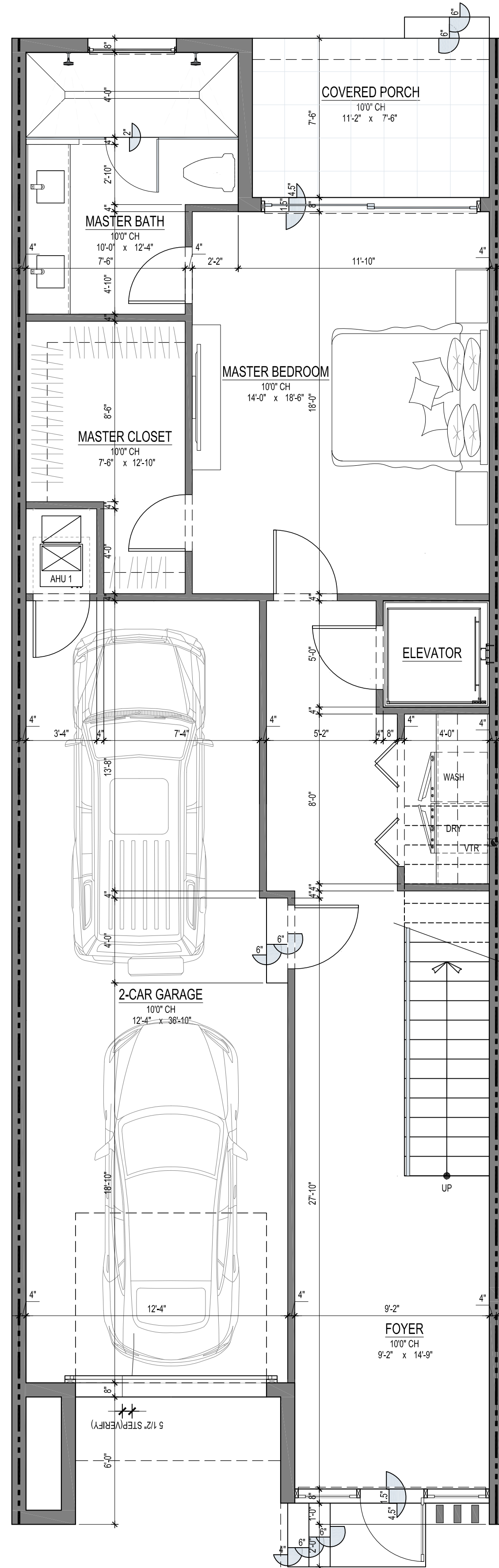
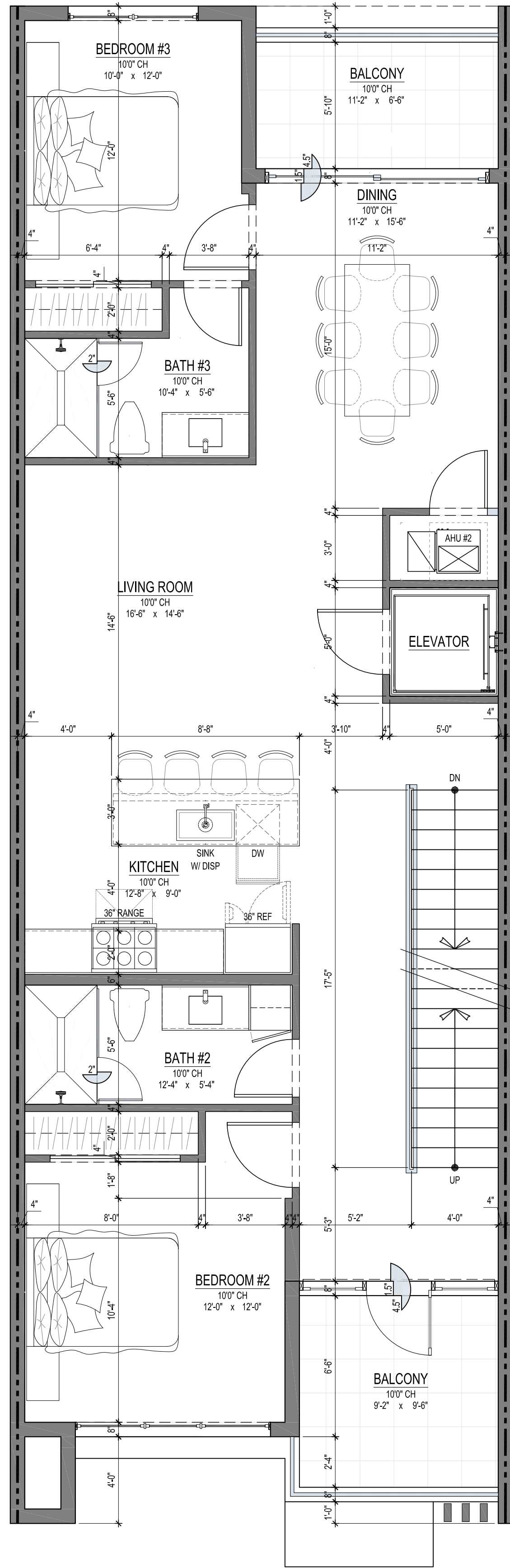
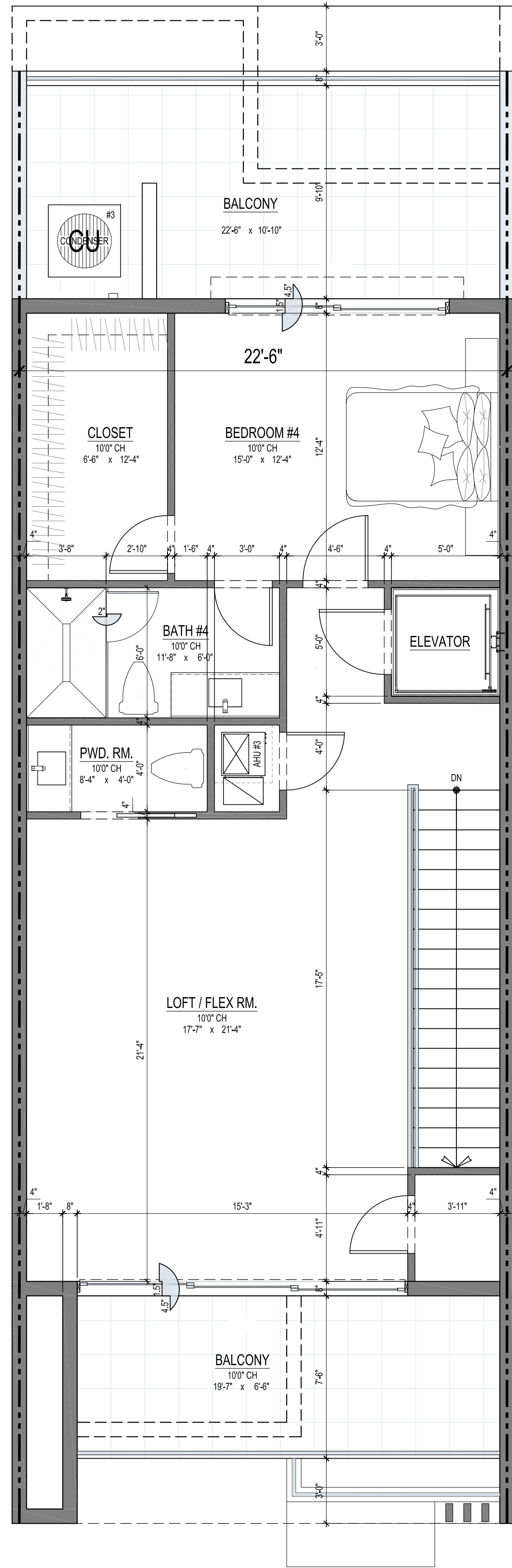


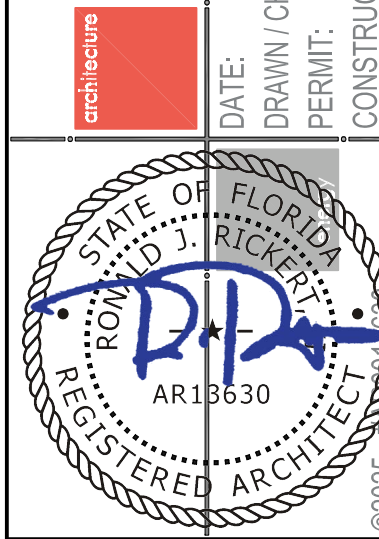
TYPICAL INTERIOR UNIT TYPE - FLOOR PLAN LAYOUTS



INTERIOR UNIT TYPE - AREA CALCULATION	
1ST FLOOR A/C	950 SQ. FT.
2ND FLOOR A/C	1323 SQ. FT.
3RD FLOOR A/C	962 SQ. FT.
TOTAL A/C	3235 SQ. FT.
2-CAR GARAGE	470 SQ. FT.
COVERED ENTRY	21 SQ. FT.
2ND FLOOR - COVERED FRONT BALCONY	92 SQ. FT.
2ND FLOOR - COVERED REAR BALCONY	75 SQ. FT.
3RD FLOOR - COVERED FRONT BALCONY	92 SQ. FT.
TOTAL COVERED AREA	3986 SQ. FT.
3RD FLOOR - REAR BALCONY	236 SQ. FT.
TOTAL	4222 SQ. FT.

DRC

PZ25-12000046  
06/03/2026



DATE: 9-2-2025  
DRAWN / CHECKED: LNU/LJR  
PERMIT: .  
CONSTRUCTION: .

REVISIONS:  
DRC ZONING REVIEW  
DRC ZONING RESUBMITTAL  
DRC ZONING RESUBMITTAL

12-1-2025  
3-2-2026  
4-28-2026

S.E. 5TH STREET TOWNHOMES  
FOR: MARSAL MAINTENANCE CORP.  
3305 S.E. 5TH STREET  
POMPANO BEACH, FL 33062

architecture + energy of intelligence

INTELAE

offices: 561.672.7124 website: intelae.com  
1615 south federal highway + suite 206  
boca raton + florida + 33432

#25009

A4.0